

Founded in 1931, JVS SoCal has a long history of innovative programs designed to assist people with disabilities achieve their career and employment goals. Our Comprehensive Vocational Evaluation program also offers state-of-the-art assistive technology, including specialized services for the blind and visually impaired. This enables us to provide customized services and accommodations tailored to meet the needs of each participant.

Services are offered at no cost to participants and individuals referred by the DOR. Private clients are welcome and Vocational Evaluations can be provided on a fee-for-service basis.

With thanks to our generous donors and funders for their support:

- Women's Leadership Network (WLN)
- California Department of Rehabilitation
- Karl Kirchgessner Foundation
- LA Trial Lawyers Charities

JVS SoCal

6505 Wilshire Boulevard
Suite 200
Los Angeles, CA 90048

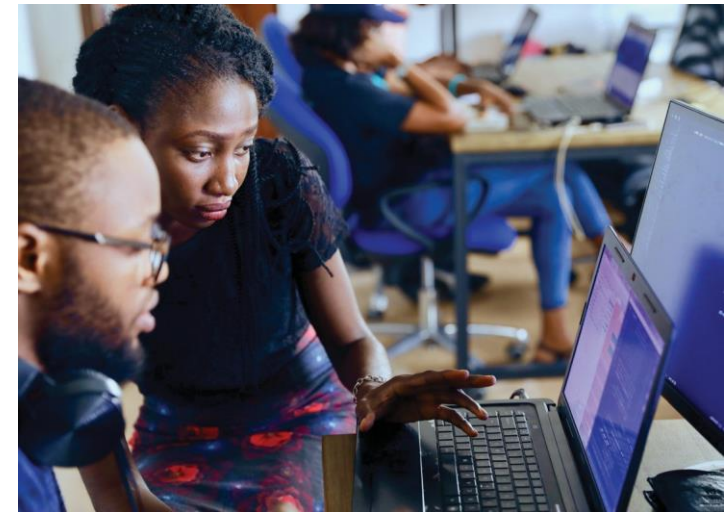
Phone: 888-216-7022
TTY: (323) 761-5101

assessment@jvs-socal.org
www.jvs-socal.org

Services provided:

In-Person
Virtually
Hybrid of both

Comprehensive Vocational Evaluation



Jobs.Vision.Success.

Providing Hope and Economic
Opportunity For All



Vocational Evaluation for People with Disabilities

Vocational Assessment provides a concise look at an individual's skills, aptitudes and interests to determine the next best career step. The purpose of Vocational Assessment and Evaluation is to assist you to obtain employment.

Vocational Evaluation is a comprehensive process that utilizes a range of work activities - both real and simulated - as a tool to assess your capabilities. The Vocational Evaluation incorporates a range of information, including medical, psychological, social, vocational, cultural and economic data so we can be effective in helping you achieve your goals.

The Process

1. Orientation
2. Individual vocational evaluation plan development
3. Initial assessments
4. Staff recommendations following assessments
5. Exit interview including written report submitted to participant and referral agency.

Length of Evaluation

The length of your evaluation is determined by your counselor or referral agency and is based on your individual needs and the goals of the evaluation.

People We Serve

- Consumers with Disabilities
- L.A. County GAIN and GROW Participants
- California Department of Rehabilitation Consumers
- California Department of Developmental Services Regional Centers Consumers
- Individuals in Recovery
- Private Clients

JVS SoCal Team

Our staff is comprised of highly qualified individuals, including Certified Rehabilitation Counselors (CRC). JVS SoCal is accredited by the Commission on Accreditation of Rehabilitation Facilities (CARF).

